

Why is the Clock Ticking?

Welfare Data Tracking
Implementation Project

Why is the Clock Ticking?

- The following slides provide different scenarios and the reason why the different time clocks are ticking.
- The Welfare Data Tracking Implementation Project (WDTIP) website has reference materials used in these scenarios: <https://www.wdtip.ca.gov>

Scenario I



Program Participation

- The County checks the Program Summary (PSUM) screen and finds a CalWORKs record with aid code 30 for the month of January 2007.
- CalWORKs Aid Code 30 record will tick the TANF 60-month and CalWORKs 60-month time-clocks.

Program Summary Screen

PSUM

TRAC INFORMATION SYSTEM PROGRAM SUMMARY

LAST : DOG
FIRST : GIZMO
MIDDLE : THE

SUFY :
DOB : 03/17/1969
SEX : M

CIN : 74566502H
SSN :
ALIEN# :

SEL	CNVRTD	COUNTY	AID CD	SERIAL	FBY	PRSN	PROGRAM	START	END
=	Y	01	30	1234567	0	00	CALWORKS	01/2007	01/2007

OVERLAPPING PROGRAM PARTICIPATION : N
SELECT ONE AND PRESS ENTER

PAGE: 01/01

F1=HELP F2=IINQ F3=PREV F4=SCRN F5=UPRG F7=UP F8=DN F10=TSUM F11=MEDS F12=TRAC

4B

:00.1

09/03

Time Clock Summary Screen

- The County checks the Time Clock (TSUM) screen, expecting to see one month used on both the TANF 60-month and CalWORKs 60-month time clocks.
- TANF shows two months used on the time clock. Non-Cal months shows 000.

Time Clock Summary

TSUM

TRAC INFORMATION SYSTEM TIME CLOCK SUMMARY

LAST : DOG
FIRST : GIZMO
MIDDLE : THE

SUFY :
DOB : 03/17/1969
SEX : M

CIN : 74566502H
SSN :
ALIEN# :

	TANF 60	CALWORKS 60	WTW 24
TIME CLOCK START MONTH	01/2007	01/2007	
TIME CLOCK END MONTH			
MONTHS USED	002	001	000
NON-CAL MONTHS *	000	000	N/A
WTW EXTENSION MONTHS *	N/A	N/A	000
EXCEPTION MONTHS	000	000	000
REPAY MONTHS	000	000	N/A

LAST CALCULATED DATE :
OVERLAPPING PROGRAM PARTICIPATION : N
* INCLUDED IN MONTHS USED

F1=HELP F2=IINQ F3=PREV F4=SCRN F11=MEDS F12=TRAC

4B

:00.1

01/02

Individual Detail Screen (IDET)

- The County check the flags on the Individual Detail (IDET) screen. The IDET screen shows:
 - The TANF 60-month time and the CalWORKs 60-month time clock has been initialized.
 - The IDET Non-CAL flag and Diversion flag is “N”.
 - The IDET Exception Indicators all show N. Exceptions will reduce the time clock months.

IDET Indicators

IDET

TRAC INFORMATION SYSTEM INDIVIDUAL DETAIL

LAST : DOG
FIRST : GIZMO
MIDDLE : THE

SUFY : CIN : 74566502H
DOB : 03/17/1969 SSN :
SEX : M ALIEN# :

BIRTH COUNTRY :
BIRTH STATE :
ALTERNATE IDENTITY : Y
LAST COUNTY OF RECORD : 8

TIMECLOCK INDICATOR
A. TANF 60 : Y
B. CAL 60 : Y
C. NON-CAL MONTHS : N
D. WTW 24 : N

EXCEPTIONS INDICATORS
A. SANCTIONS : N
B. EXEMPTIONS : N
C. GOOD CAUSE : N
D. EXTENDER : N
E. REPAY : N

DIVERSION INDICATOR : N

F1=HELP F2=IINQ F3=PREV F4=SCRN F9=NXTSCRN F10=TSUM F11=MEDS F12=TRAC

4B

:00.1

01/02

Supportive Services Only Update (USSO)

- Since there is no diversion payment or Non-California participation, the only screen left to check is the Supportive Services Only Update (USSO) screen.

USSO Record

- Navigate over to the USSO screen.
- The USSO screen shows a supportive services record issued for the month of February 2007, with an employed flag of “N”.

USSO Record

USSO

TRAC INFORMATION SYSTEM
SUPPORTIVE SERVICES ONLY UPDATE

LAST	:	DOG	SUF	:		CIN	:	74566502H
FIRST	:	GIZMO	DOB	:	03/17/1969	SSN	:	
MIDDLE	:	THE	SEX	:	M	ALIEN#	:	

SELECT A RECORD TO MODIFY OR DELETE (M/D):

SEL	COUNTY #	REASON	EFFECTIVE MONTH	EMPLOYED
=	01	02	02 / 2007	N

ADD A NEW RECORD (A):

SEL	REASON	EFFECTIVE MONTH	EMPLOYED
-	--	-- / ----	-

PAGE: 01/01

F1=HELP F2=IINQ F3=PREV F4=SCRN F7=UP F8=DOWN F10=TSUM F11=MEDS F12=TRAC

4B

:00.1

10/05

USSO Record Treated as SG/SS Record

A Supportive Services Record with the Employed Flag = “N” is treated as a SG/SS record. Per the TRAC Reference Codes, this SG/SS record will tick the TANF 60-month clock; but will not tick the CalWORKs 60-month clock.

PGM TYPE CD	AID CD	START DATE	END DATE	PGM PT TYP TXT	FED STATE ONLY IND	TANF 60 FG	CW 60 FG	CW 1824 FG	DIV FG
SG	SS	1/1/98		SYSTEM GENERATED- Individual is a Former Recipient of Cash Aid and Receives Only Child Care, Case Management or Supportive Services. – TANF/CalWORKs funds.	N	Y	N	N	N

USSO Effects TANF 60-Month Time Clock

TCAL

TRAC INFORMATION SYSTEM TANF 60-MONTH CALENDAR

LAST : DOG
FIRST : GIZMO
MIDDLE : THE

SUFY :
DOB : 03/17/1969
SEX : M

CIN : 74566502H
SSN :
ALIEN# :

TANF 60-MONTH TIME CLOCK START MONTH : 01/2007
TANF 60-MONTH TIME CLOCK END MONTH :
TANF 60-MONTHS USED : 002
NON-CAL MONTHS (INCLUDED IN MONTHS USED) : 000
EXCEPTION MONTHS : 000
REPAY MONTHS : 000

	JAN	FEB	MAR	APR	MAY	JUN	JUL	AUG	SEP	OCT	NOV	DEC
2007	Y	Y	-	-	-	-	-	-	-	-	-	-

PAGE: 01/01

F1=HELP F2=IINQ F3=PREV F4=SCRN F7=UP F8=DOWN F10=TSUM F11=MEDS F12=TRAC

4B

⌚ :00.1

01/02

Scenario II



Program Participation

- The County checks the PSUM screen and finds a CalWORKs record with aid code 30, effective January 2011, without an end date.
- The CalWORKs Aid Code 30 record will tick the TANF 60-month and CalWORKs 60-month time-clocks.

Sanctioned Individual

- This individual was sanctioned effective 02/01/2011, with program exception record type 02 and program exception reason code 200. This sanction record appears on the Exception Summary (ESUM) screen.
- The TRAC Reference Codes states a program exception type/reason code of 02/200 impacts the TANF 60-month, CalWORKs 60-month, & Welfare to Work 24-month time clocks.

ESUM Screen

ESUM

TRAC INFORMATION SYSTEM TIME CLOCK EXCEPTION SUMMARY

LAST : DOG
FIRST : GIZMO
MIDDLE : THE

SUFY :
DOB : 03/17/1969
SEX : M

CIN : 74566502H
SSN :
ALIEN# :

SEL	REASON	DESCRIPTION	CTY-AID-SER-FBU-PRSN	START	END
=	200	Sanction - 1st Non-Comply	01-30-1234567-0-00	02/2011	

SELECT ONE AND PRESS ENTER

PAGE: 01/01

F1=HELP F2=IINQ F3=PREV F4=SCRN F5=UPEX F7=UP F8=DN F10=TSUM F11=MEDS F12=TRAC

4B

:00.1

09/03

Time Clock Calculations

- The County expects only one month to be on each the TANF 60-month & CalWORKs 60-month time clocks. CalWORKs started effective 01/01/2011 and the individual was sanctioned 02/01/2011.
- The latest TSUM screen displays TANF 60-month & CalWORKs 60-month time clocks both have a value = 007.

TSUM Time Clock Calculations

TSUM

TRAC INFORMATION SYSTEM TIME CLOCK SUMMARY

LAST : DOG
FIRST : GIZMO
MIDDLE : THE

SUFFIX :
DOB : 03/17/1969
SEX : M

CIN : 74566502H
SSN :
ALIEN# :

	TANF 60	CALWORKS 60	WTW 24
TIME CLOCK START MONTH	01/2011	01/2011	
TIME CLOCK END MONTH			
MONTHS USED	007	007	000
NON-CAL MONTHS *	000	000	N/A
WTW EXTENSION	N/A	N/A	000
WTW EXTENSION MONTHS	N/A	N/A	000
EXCEPTION MONTHS	000	000	N/A
REPAY MONTHS	000	000	

LAST CALCULATED DATE :
OVERLAPPING PROGRAM PARTICIPATION : N
* INCLUDED IN MONTHS USED

F1=HELP F2=IINQ F3=PREV F4=SCRN F11=MEDS F12=TRAC

4B

@ :00.1

14/52

IDET Indicators

- The County checks the IDET screen to see if the Sanction Flag shows a “Y”.

IDET Sanction Indicator

IDET

TRAC INFORMATION SYSTEM INDIVIDUAL DETAIL

LAST : DOG
FIRST : GIZMO
MIDDLE : THE

SUFEX :
DOB : 03/17/1969
SEX : M

CIN : 74566502H
SSN :
ALIEN# :

BIRTH COUNTRY :
BIRTH STATE :
ALTERNATE IDENTITY : Y
LAST COUNTY OF RECORD : 8

TIMECLOCK INDICATOR
A. TANF 60 : Y
B. CAL 60 : Y
C. NON-CAL MONTHS : N
D. WTW 24 : N

EXCEPTIONS INDICATORS
A. SANCTIONS : Y
B. EXEMPTIONS : N
C. GOOD CAUSE : N
D. EXTENDER : N
E. REPAY : N

DIVERSION INDICATOR : N

F1=HELP F2=IINQ F3=PREV F4=SCRN F9=NXTSCRN F10=TSUM F11=MEDS F12=TRAC

4B

:00.1

01/02

TRAC Reference Codes

- The County checks the TRAC Reference Codes (page I-49) for additional information. This document, in the Program Exception Reason Type Code Section, states:
 - *Important note: For Program Exception Code 02 Sanction (with Reason codes 200, 201, 202, 203, 204, 205) and 05 Excluded Person (with Reason code 500), the county must first end-date the current aid by sending a CalWORKs program discontinuance transaction with a discontinuance date the month prior to the start date of the exception. If the county fails to send in a CalWORKs program discontinuance transaction to end-date the aid, the CalWORKs time clock will continue to tick. For example, if the county wants the Program Exception to start on November 1, 2005, the current CalWORKs Program Participation record (in PSUM screen) must have an end-date of October 31, 2005.

Program Participation Record Corrected

- The County goes to the Update Program Participation (UPRG) screen to modify the CalWORKs record to end prior to the sanction's effective date.

PSUM

```
LAST      : DOG
FIRST     : GIZMO
MIDDLE    : THE
```

SUFIX :
DOB : 03/17/1969
SEX : M

CIN : 74566502H
SSN :
ALIEN# :

SEL	CNVRTD	COUNTY	AID	CD	SERIAL	FBU	PRSN	PROGRAM	START	END
=	Y	01	30		1234567	0	00	CALWORKS	01/2011	01/2011

OVERLAPPING PROGRAM PARTICIPATION : N
SELECT ONE AND PRESS ENTER

PAGE: 01/01

F1=HELP F2=IINQ F3=PREV F4=SCRN F5=UPRG F7=UP F8=DN F10=TSUM F11=MEDS F12=TRAC

4B

🕒 : 00.1

09/03

TSUM Recalculated Clocks

- The next day, after making the program participation record correction, the county checks the time clock calculations on the TSUM screen.

TSUM Time Clock Recalculations

TSUM

TRAC INFORMATION SYSTEM TIME CLOCK SUMMARY

LAST : DOG
FIRST : GIZMO
MIDDLE : THE

SUFY :
DOB : 03/17/1969
SEX : M

CIN : 74566502H
SSN :
ALIEN# :

	TANF 60	CALWORKS 60	WTW 24
TIME CLOCK START MONTH	01/2007	01/2007	
TIME CLOCK END MONTH			
MONTHS USED	001	001	000
NON-CAL MONTHS *	000	000	N/A
WTW EXTENSION MONTHS *	N/A	N/A	000
EXCEPTION MONTHS	000	000	000
REPAY MONTHS	000	000	N/A

LAST CALCULATED DATE :
OVERLAPPING PROGRAM PARTICIPATION : N
* INCLUDED IN MONTHS USED

F1=HELP F2=IINQ F3=PREV F4=SCRN F11=MEDS F12=TRAC

4B

:00.1

01/02

TCAL Screen Detail

- The County verifies the information on the TANF 60-Month Calendar (TCAL) screen.
- Sanction records do not show an “E” in the month/year calendar detail area.

TCAL Detail Screen

TCAL

TRAC INFORMATION SYSTEM
TANF 60-MONTH CALENDAR

LAST : DOG
FIRST : GIZMO
MIDDLE : THE

SUFEX :
DOB : 03/17/1969
SEX : M

CIN : 74566502H
SSN :
ALIEN# :

TANF 60-MONTH TIME CLOCK START MONTH : 01/2011
TANF 60-MONTH TIME CLOCK END MONTH :
TANF 60-MONTHS USED : 001
NON-CAL MONTHS (INCLUDED IN MONTHS USED) : 000
EXCEPTION MONTHS : 000
REPAY MONTHS : 000

2011 JAN FEB MAR APR MAY JUN JUL AUG SEP OCT NOV DEC
 Y - - - - - - - - - - -

PAGE: 01/01

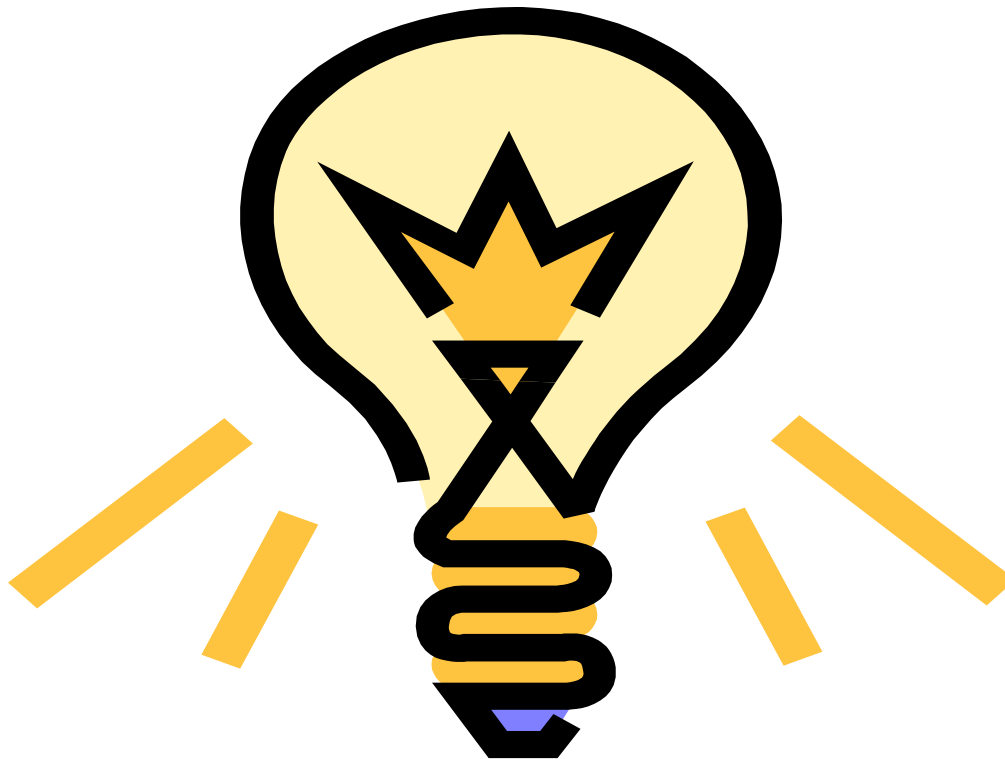
F1=HELP F2=IINQ F3=PREV F4=SCRN F7=UP F8=DOWN F10=TSUM F11=MEDS F12=TRAC

4B

:00.1

01/02

Scenario III



Program Participation Aid Code 35

- The County has an individual with a CalWORKs record with program type 04 and aid code 35.
- Program type and aid code was issued for the period December 2005 to February 2007.

PSUM CalWORKs Aid Code 35

PSUM

TRAC INFORMATION SYSTEM PROGRAM SUMMARY

LAST : DOG
FIRST : GIZMO
MIDDLE : THE

SUFEX :
DOB : 03/17/1969
SEX : M

CIN : 74566502H
SSN :
ALIEN# :

SEL	CNVRTD	COUNTY	AID CD	SERIAL	FBU	PRSN	PROGRAM	START	END
=	Y	01	35	1234567	0	00	CALWORKS	12/2005	02/2007

OVERLAPPING PROGRAM PARTICIPATION : N
SELECT ONE AND PRESS ENTER

PAGE: 01/01

F1=HELP F2=IINQ F3=PREV F4=SCRN F5=UPRG F7=UP F8=DN F10=TSUM F11=MEDS F12=TRAC

4B

:00.1

09/03

Time Clock Calculations

- The County believes program type 04 with aid code 35 does not tick the TANF 60-month time clock, but ticks the CalWORKs 60-month time clock.
- The County checks the time calculations on TSUM. TANF 60-month time clock has a value of 005 months.

TSUM TANF Months

TSUM

TRAC INFORMATION SYSTEM TIME CLOCK SUMMARY

LAST : DOG
FIRST : GIZMO
MIDDLE : THE

SUFX :
DOB : 03/17/1969
SEX : M

CIN : 74566502H
SSN :
ALIEN# :

	TANF 60	CALWORKS 60	WTW 24
TIME CLOCK START MONTH	12/2005	12/2005	
TIME CLOCK END MONTH			
MONTHS USED	005	015	000
NON-CAL MONTHS *	000	000	N/A
WTW EXTENSION	N/A	N/A	000
WTW EXTENSION MONTHS	N/A	N/A	000
EXCEPTION MONTHS	000	000	N/A
REPAY MONTHS	000	000	

LAST CALCULATED DATE :
OVERLAPPING PROGRAM PARTICIPATION : N
* INCLUDED IN MONTHS USED

F1=HELP F2=IINQ F3=PREV F4=SCRN F11=MEDS F12=TRAC

4B

:00.1

01/02

TCAL Screen

- The County checks the TCAL Screen for additional information.
- The County notices that “Y” appears for the period October 2006 to February 2007 (5 months).

TCAL Screen Detail

TCAL

TRAC INFORMATION SYSTEM TANF 60-MONTH CALENDAR

LAST : DOG
FIRST : GIZMO
MIDDLE : THE

SUFFIX :
DOB : 03/17/1969
SEX : M

CIN : 74566502H
SSN :
ALIEN# :

TANF 60-MONTH TIME CLOCK START MONTH : 12/2005
TANF 60-MONTH TIME CLOCK END MONTH :
TANF 60-MONTHS USED : 005
NON-CAL MONTHS (INCLUDED IN MONTHS USED) : 000
EXCEPTION MONTHS : 000
REPAY MONTHS : 000

	JAN	FEB	MAR	APR	MAY	JUN	JUL	AUG	SEP	OCT	NOV	DEC
2007	Y	Y	-	-	-	-	-	-	-	-	-	-
2006	N	N	N	N	N	N	N	N	N	Y	Y	Y
2005	-	-	-	-	-	-	-	-	-	-	-	N

PAGE: 01/01

F1=HELP F2=IINQ F3=PREV F4=SCRN F7=UP F8=DOWN F10=TSUM F11=MEDS F12=TRAC

4B

:00.1

01/02

TRAC Reference Codes

- The County checks the TRAC Reference Codes to determine if the time clock flags were changed for the program participation type/aid code combination of 04/35, effective October 2006.

Time Clock Changes for 04/35

The TRAC Reference Codes displays - effective 10/01/2006; the 04/35 Program Participation Type Codes now tick the TANF 60-month clock.

PGM TYPE CD	AID CD	START DATE	END DATE	PGM PT TYP TXT	FED STATE ONLY IND	TANF 60 FG	CW 60 FG	wtw 1824 FG	DIV FG
04	35	10/01/06		CalWORKs, California Work Opportunity and Responsibility for Kids Program, Two-Parent Families – CalWORKs /TANF- (Linked Medi-Cal) No SOC	N	Y	Y	N	N

Scenario IV



Child Support Reimbursement

- The County checks TRAC to see if the child support reimbursement “unticks” the CalWORKs 60-month clock.
- The CalWORKs 60-month calendar (KCAL) screen provides the detailed information. The County finds no “E” indicating an child support reimbursement record has been applied.

KCAL 12/2006

KCAL

TRAC INFORMATION SYSTEM CALWORKS 60-MONTH CALENDAR

LAST	: DOG	SUF	:	CIN	: 74566502H
FIRST	: GIZMO	DOB	: 03/17/1969	SSN	:
MIDDLE	: THE	SEX	: M	ALIEN#	:

CALWORKS 60-MONTH TIME CLOCK START MONTH	:	12/2006
CALWORKS 60-MONTH TIME CLOCK END MONTH	:	
CALWORKS 60-MONTHS USED	:	004
NON-CAL MONTHS (INCLUDED IN MONTHS USED)	:	000
EXCEPTION MONTHS (EXCLUDES EXTENDER MOS)	:	000
EXTENDER MONTHS (INCLUDED IN MONTHS USED)	:	000
REPAY MONTHS	:	000

	JAN	FEB	MAR	APR	MAY	JUN	JUL	AUG	SEP	OCT	NOV	DEC
2007	Y	Y	Y	-	-	-	-	-	-	-	-	-
2006	-	-	-	-	-	-	-	-	-	-	-	Y

PAGE: 01/01

F1=HELP F2=IINQ F3=PREV F4=SCRN F7=UP F8=DOWN F10=TSUM F11=MEDS F12=TRAC

4B

:00.1

01/02

UCSR 12/2006

- The County checks the Child Support Reimbursement Update (UCSR) Screen to determine if the child support reimbursement record is posted correctly for 12/2006.

UCSR Screen

UCSR

TRAC INFORMATION SYSTEM CHILD SUPPORT REIMBURSEMENT UPDATE

LAST	:	DOG	SUF	:		CIN	:	74566502H
FIRST	:	GIZMO	DOB	:	03/17/1969	SSN	:	
MIDDLE	:	THE	SEX	:	M	ALIEN#	:	

SELECT A RECORD TO MODIFY OR DELETE (M/D):

SEL	COUNTY #	EFFECTIVE MONTH
=	01	12 / 2006

ADD A NEW RECORD (A):

SEL	EFFECTIVE MONTH
-	-- / ----

PAGE: 01/01

F1=HELP F2=IINQ F3=PREV F4=SCRN F7=UP F8=DOWN F10=TSUM F11=MEDS F12=TRAC

4B

:00.1

10/05

PSUM Records

- The County checks the program participation records in PSUM to verify if the aid is correctly posted.
- The County finds there is overlapping aid for the 12/2006 period. Aid was issued by two different counties.

Aid Issued by Two Counties

PSUM

TRAC INFORMATION SYSTEM PROGRAM SUMMARY

LAST : DOG
FIRST : GIZMO
MIDDLE : THE

SUFY :
DOB : 03/17/1969
SEX : M

CIN : 74566502H
SSN :
ALIEN# :

SEL	CNVRTD	COUNTY	AID CD	SERIAL	FBU	PRSN	PROGRAM	START	END
=	Y	10	30	1234567	0	00	TEMP HOME	12/2006	12/2006
-	Y	01	30	1234567	0	00	CALWORKS	12/2006	03/2007

OVERLAPPING PROGRAM PARTICIPATION : Y
SELECT ONE AND PRESS ENTER

PAGE: 01/01

F1=HELP F2=IINQ F3=PREV F4=SCRN F5=UPRG F7=UP F8=DN F10=TSUM F11=MEDS F12=TRAC

4B

:00.1

09/03

Clock will Tick

- Because program participation was issued by two counties for the 12/2006 period, each county must submit a child support reimbursement record to “untick” the CalWORKs 60-month time clock.

Correction Made to Program Participation

- One of the counties identifies that the wrong program participation effective date was used. The program participation record's effective date was modified through the Program Participation Update (UPRG) screen.

Record Modified

PSUM

TRAC INFORMATION SYSTEM PROGRAM SUMMARY

LAST : DOG
FIRST : GIZMO
MIDDLE : THE

SUFY :
DOB : 03/17/1969
SEX : M

CIN : 74566502H
SSN :
ALIEN# :

SEL	CNVRTD	COUNTY	AID CD	SERIAL	FBU	PRSN	PROGRAM	START	END
=	Y	10	30	1234567	0	00	TEMP HOME	12/2007	12/2007
-	Y	01	30	1234567	0	00	CALWORKS	12/2006	03/2007

OVERLAPPING PROGRAM PARTICIPATION : N
SELECT ONE AND PRESS ENTER

PAGE: 01/01

F1=HELP F2=IINQ F3=PREV F4=SCRN F5=UPRG F7=UP F8=DN F10=TSUM F11=MEDS F12=TRAC

4B

:00.1

09/03

Time Clock Recalculations

- The following day the County verifies that the time clock recalculations are reflected on the TSUM and KCAL screens.

TSUM Recalculations

TSUM		TRAC INFORMATION SYSTEM TIME CLOCK SUMMARY		
LAST : DOG	SUFY :	CIN :	74566502H	
FIRST : GIZMO	DOB : 03/17/1969	SSN :		
MIDDLE : THE	SEX : M	ALIEN# :		
	TANF 60	CALWORKS 60	WTW 24	
TIME CLOCK START MONTH	12/2006	12/2006		
TIME CLOCK END MONTH				
MONTHS USED	005	004	000	
NON-CAL MONTHS *	000	000	N/A	
WTW EXTENSION	N/A	N/A	000	
WTW EXTENSION MONTHS	N/A	N/A	000	
EXCEPTION MONTHS	000	001	N/A	
REPAY MONTHS	000	000		
LAST CALCULATED DATE :				
OVERLAPPING PROGRAM PARTICIPATION : N				
* INCLUDED IN MONTHS USED				
F1=HELP F2=IINQ F3=PREV F4=SCRN F11=MEDS F12=TRAC				
4B	:00.1	01/02		

KCAL

```
LAST      : DOG
FIRST     : GIZMO
MIDDLE    : THE
```

SUFIX :
DOB : 03/17/1969
SEX : M

CIN : 74566502H
SSN :
ALIEN# :

CALWORKS 60-MONTH TIME CLOCK START MONTH	:	12/2006
CALWORKS 60-MONTH TIME CLOCK END MONTH	:	
CALWORKS 60-MONTHS USED	:	004
NON-CAL MONTHS (INCLUDED IN MONTHS USED)	:	000
EXCEPTION MONTHS (EXCLUDES EXTENDER MOS)	:	001
EXTENDER MONTHS (INCLUDED IN MONTHS USED)	:	000
REPAY MONTHS	:	000

[illegible]

PAGE: 01/01

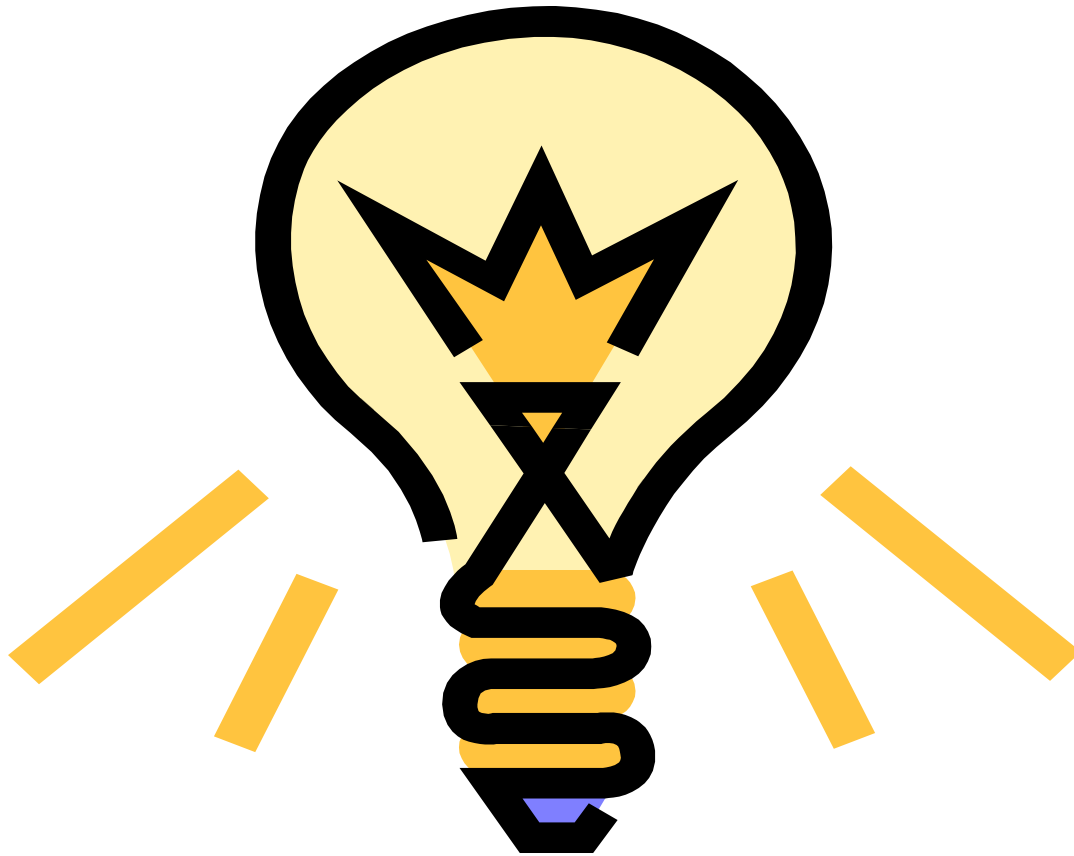
F1=HELP F2=IINQ F3=PREV F4=SCRN F7=UP F8=DOWN F10=TSUM F11=MEDS F12=TRAC

4B

🕒 :00.1

01/02

Scenario V



WTW 24-Month Time Clock

- The WTW 24-month time clock will only tick if there are PSUM records and a WTW Plan Sign Date.
- The WTW 24-month time clock begins to tick effective the first of the following month, of the WTW Plan Sign Date.
- The WTW 24-month time clock was in effect from 01/01/2013 – 04/30/2022.

PSUM records

PSUM

TRAC INFORMATION SYSTEM PROGRAM SUMMARY

LAST	:	BATH	SUF	:		CIN	:	73687212H				
FIRST	:	OIL	DOB	:	02/02/1970	SSN	:					
MIDDLE	:		SEX	:	M	ALIEN#	:					
SEL		CNV		COUNTY	AID	CD	SERIAL	FB	PR	PROGRAM	START	END
=		Y		24	30		1234567	0	00	CALWORKS	01/2013	08/2013

OVERLAPPING PROGRAM PARTICIPATION : N
SELECT ONE AND PRESS ENTER

PAGE: 01/01

F1=HELP F2=IINQ F3=PREV F4=SCRN F5=UPRG F7=UP F8=DN F10=TSUM F11=MEDS F12=TRAC

4B

:00.1

09/03

WSUM records

WSUM

TRAC INFORMATION SYSTEM WELFARE TO WORK 24-MO SUMMARY

LAST : BATH
FIRST : OIL
MIDDLE :

SUFEX :
DOB : 02/02/1970
SEX : M

CIN : 73687212H
SSN :
ALIEN# :

SEL CNTY #
= 24

WORKPLAN SIGN DATE
01/01/2013

RECEIVED DT
07/31/2013

PAGE: 01/01

F1=HELP F2=IINQ F3=PREV F4=SCRN F7=UP F8=DOWN F10=TSUM F11=MEDS F12=TRAC

4B

:00.1

09/03

WTW 24-Month Time Clock Start Date

- Because the WTW Plan's Sign Date is 01/01/13, the WTW 24-month time clock will begin ticking effective February 2013.
- Per ACL 12-67, the WTW 24-month time clock will begin to tick effective the first of the following month, of the WTW Plan Sign Date, (Feb. 2013 for this scenario).

WTW 24-Month Time Clock Elimination

- Per ACL 20-120, the WTW 24-month time clock was eliminated on April 30, 2022.
- TRAC historical WTW displayed data is from January 01, 2013, through April 30, 2022.

WCAL records

WCAL

TRAC INFORMATION SYSTEM WTW 24-MONTH CALENDAR

LAST : BATH
FIRST : OIL
MIDDLE :

SUFEX :
DOB : 02/02/1970
SEX : M

CIN : 73687212H
SSN :
ALIEN# :

EARLIEST WTW PLAN SIGN DATE : 01/01/2013
WTW 24-MONTH TIME CLOCK START MONTH : 02/2013
WTW 24-MONTH TIME CLOCK END MONTH :
WTW 24-MONTHS USED : 007
EXCEPTION MONTHS : 000
EXTENSION MONTHS (INCLUDED IN MOS USED): 000

	JAN	FEB	MAR	APR	MAY	JUN	JUL	AUG	SEP	OCT	NOV	DEC
2013	-	Y	Y	Y	Y	Y	Y	Y	-	-	-	-

PAGE: 01/01

F1=HELP F2=IINQ F3=PREV F4=SCRN F7=UP F8=DOWN F10=TSUM F11=MEDS F12=TRAC

4B

:00.1

01/02

TSUM display

TSUM

TRAC INFORMATION SYSTEM TIME CLOCK SUMMARY

LAST : BATH
FIRST : OIL
MIDDLE :

SUFY :
DOB : 02/02/1970
SEX : M

CIN : 73687212H
SSN :
ALIEN# :

|

	TANF 60	CALWORKS 60	WTW 24
TIME CLOCK START MONTH	01/2013	01/2013	02/2013
TIME CLOCK END MONTH			
MONTHS USED	008	008	007
NON-CAL MONTHS *	000	000	N/A
WTW EXTENSION MONTHS *	N/A	N/A	000
EXCEPTION MONTHS	000	000	000
REPAY MONTHS	000	000	N/A

LAST CALCULATED DATE :
OVERLAPPING PROGRAM PARTICIPATION : N
* INCLUDED IN MONTHS USED

F1=HELP F2=IINQ F3=PREV F4=SCRN F11=MEDS F12=TRAC

4B

:00.1

01/02

Conclusion

- This concludes the training module on “Why the clock is ticking?”